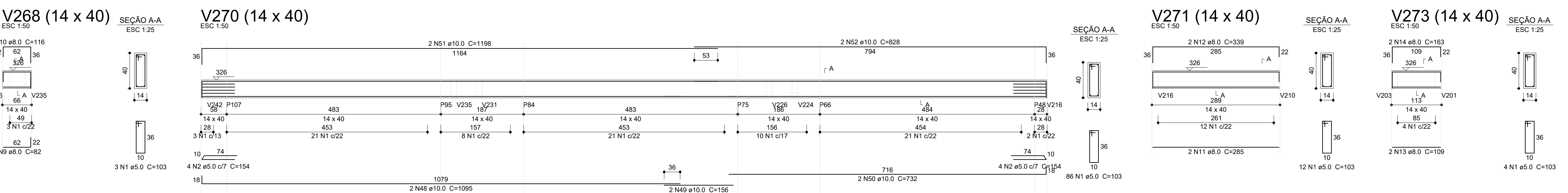
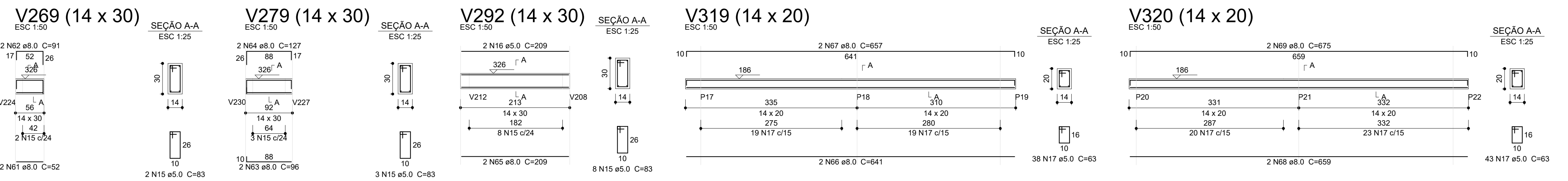
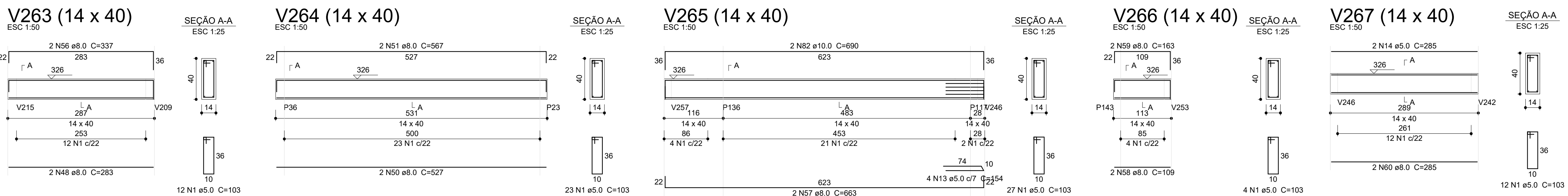
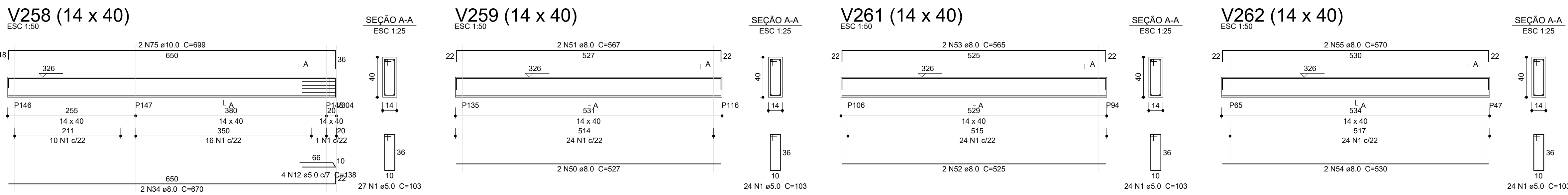
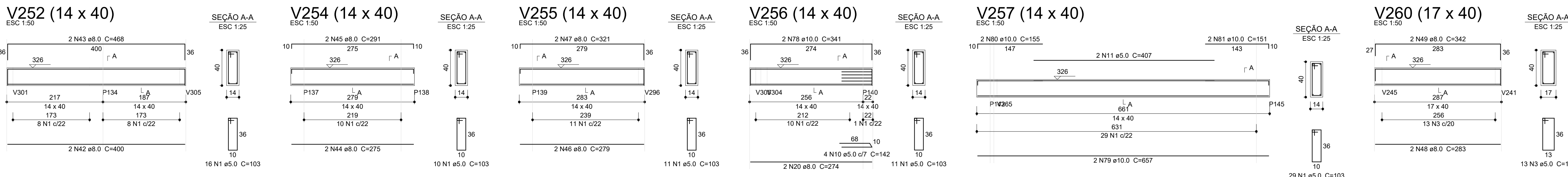


2 DETALHAMENTO VIGAS TÉRREO



Relação do aço

AÇO	N	DIAM (mm)	QUANT	C.UNIT (cm)	C.TOTAL (cm)
CABO	1	5,0	463	103	47689
	2	5,0	12	154	1848
	3	5,0	2	188	376
	4	5,0	1	144	144
	5	5,0	10	143	1430
	6	5,0	10	83	830
	7	5,0	13	109	1417
	8	5,0	2	45	90
	9	8,0	2	82	164
	10	8,0	2	116	232
	11	8,0	2	285	570
	12	8,0	2	339	678
	13	8,0	2	109	218
	14	8,0	2	163	326
	15	8,0	2	863	1726
	16	8,0	2	137	274
	17	8,0	2	183	366
	18	8,0	2	139	278
	19	8,0	2	171	342
	20	8,0	2	639	1278
	21	8,0	2	671	1342
	22	8,0	2	633	1266
	23	8,0	2	673	1346
	24	8,0	2	912	1824
	25	8,0	1	174	174
	26	8,0	2	901	1802
	27	8,0	2	438	876
	28	8,0	2	344	688
	29	8,0	2	372	744
	30	8,0	2	598	1196
	31	8,0	4	293	1172
	32	8,0	2	333	666
	33	8,0	2	528	1056
	34	8,0	2	568	1136
	35	8,0	2	432	864
	36	8,0	2	337	674
	37	8,0	2	365	730
	38	8,0	2	323	646
	39	8,0	2	528	1056
	40	8,0	2	568	1136
	41	8,0	2	34	68
	42	8,0	2	74	148
	43	8,0	2	45	90
	44	8,0	2	847	1694
	45	8,0	2	506	1012
	46	8,0	2	1198	2396
	47	8,0	2	218	436
	48	10,0	2	1065	2130
	49	10,0	2	156	312
	50	10,0	2	732	1464
	51	10,0	2	1198	2396
	52	10,0	2	828	1656
	53	10,0	2	690	1380
	54	10,0	2	233	466
	55	10,0	2	269	538
	56	10,0	8	111	888
	57	10,0	2	762	1524
	58	10,0	2	546	1092
	59	10,0	2	242	484
	60	10,0	2	278	556
	61	12,5	2	1184	2368
	62	12,5	2	420	840
	63	12,5	2	161	322
	64	12,5	2	1049	2098
	65	12,5	2	950	1900
	66	12,5	2	214	428
	67	12,5	2	237	474
	68	12,5	2	247	494
	69	12,5	2	674	1348

Resumo do aço

AÇO	DIAM (mm)	C.TOTAL (m)	QUANT (Barras)	PESO (kg)
CABO	5,0	323,4	27	127,6
	10,0	149,5	13	92,1
	12,5	102,8	9	99
	5,0	666,4	56	103,2
PESO TOTAL				

Volume de concreto (C-30) = 7,56 m³  
Área de forma = 124,74 m²

Relação do aço

V235	V236	V237			
V238	V239	V240			
V241	V242	V243			
V244	V245	V246			
V247	V248	V249			
V250	V251	V252			
V251	V252	V253			
V256	V257	V258			
V259	V260	V261			
V262	V263	V264			
V265	V266	V267			
V269	V270	V272			
V319	V320				
ACO	N	DIAM	QUANT	C.UNIT	C.TOTAL
CA80	1	5.0	433	103	4559
	2	5.0	4	137	548
	3	5.0	62	109	6758
CA80	4	5.0	145	145	145
	5	5.0	4	140	560
	6	5.0	148	116	116
	7	5.0	8	153	1224
	8	5.0	4	143	572
	9	5.0	134	134	134
	10	5.0	4	142	568
	11	5.0	147	814	607
	12	5.0	4	138	552
	13	5.0	154	610	154
	14	5.0	2	185	670
	15	5.0	13	83	1073
	16	5.0	2	209	209
	17	5.0	81	63	519
	18	5.0	4	94	148
	19	5.0	2	128	256
	20	5.0	6	274	1644
	21	5.0	2	273	273
	22	5.0	6	149	1408
	23	5.0	2	152	1504
24	5.0	2	69	138	
25	5.0	2	109	218	
26	5.0	2	102	192	
27	5.0	2	124	249	
28	5.0	2	92	184	
29	5.0	2	169	338	
30	5.0	2	205	410	
31	5.0	2	259	518	
32	5.0	4	101	404	
33	5.0	2	94	188	
34	5.0	4	107	2680	
35	5.0	2	244	588	
36	5.0	2	326	652	
37	5.0	2	328	654	
38	5.0	2	287	574	
39	5.0	2	319	638	
40	5.0	2	324	648	
41	5.0	2	388	676	
42	5.0	2	400	800	
43	5.0	2	468	936	
44	5.0	2	275	550	
45	5.0	2	301	602	
46	5.0	2	279	558	
47	5.0	2	321	642	
48	5.0	2	283	566	
49	5.0	2	342	684	
50	5.0	2	322	644	
51	5.0	2	367	734	
52	5.0	2	525	1050	
53	5.0	2	565	1130	
54	5.0	2	530	1060	
55	5.0	2	702	1404	
56	5.0	2	337	674	
57	5.0	2	363	726	
58	5.0	2	397	794	
59	5.0	2	413	826	
60	5.0	2	52	104	
61	5.0	2	93	186	
62	5.0	2	96	192	
63	5.0	2	96	192	
64	5.0	2	127	254	
65	5.0	2	206	412	
66	5.0	2	441	882	
67	5.0	2	657	1314	
68	5.0	2	659	1318	
69	5.0	2	872	1744	
70	5.0	2	875	1750	
71	5.0	2	134	628	
72	5.0	2	136	656	
73	5.0	2	188	1394	
74	5.0	2	143	572	
75	5.0	2	143	584	
76	5.0	2	943	1886	
77	5.0	2	323	646	
78	5.0	2	341	682	
79	5.0	2	114	657	
80	5.0	2	155	310	
81	5.0	2	251	302	
82	5.0	2	283	380	
83	5.0	2	380	1380	